

ULTRASOUND CLEANING SYSTEM FOR BOWLING PINS, BALLS & MACHINE PARTS

FAST | CLEAN | SAFE | SEALED | ECONOMICALLY

The machines are filled with new pins, a set has been settled at the lanes end and you view an attractive bowling alley. It is a good feeling to see 10 clean white pins at the end of each lane. Players enjoy playing on a lane which is optically attractive and not just good to play.

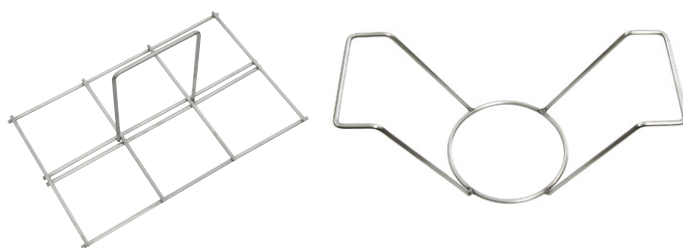


To permanently maintain this positive optical impression a regular cleaning of the pins is inevitable. But how can this be achieved fast and economically? A manual cleaning of each individual pin is definitely *not* the ideal solution.



The far better alternative is a fast, efficient and economical cleaning of your pins in our Cleanstation system. After extensive tests with different pin types regarding the optimum correlation between frequency, amplitude, cleaning liquid and temperature we can offer systems helping you to keep your bowling equipment in an optically attractive and clean condition. The system can also be used to clean machine parts from dirt and grease.

The systems come with standard supplies – a grid holder for 6 pins and a lid for holding down the pins in the liquid. A holder for cleaning bowling balls is available as an option.

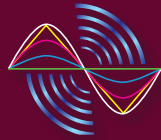


MORE THAN 50 INSTALLED SYSTEMS IN GERMANY

Meanwhile there are more than 50 installations of 6-Pin **CLEANSTATION** systems in Germany. The customer profile cover alleys from 8 to 52 lanes.

THE CLEANING PROCEDURE

Our **CLEANSTATION** Ultrasound system is designed to clean up to 6 pins simultaneously. The downholding of the pins during the cleaning is carried out by a solid plastic block. *The cleaning time takes approx. 2 to 5 minutes.* After cleaning, the pins are dried using a rough textured cloth and shortly dipped into an optional sealing bath to apply a shiny surface, which also results in an optimum machine slipping behaviour and protection.



BASIC PRINCIPLE OF ULTRASONIC CLEANING

Ultrasonic stands for oscillations with frequencies above 16 kHz. A highly energetic ultrasonic cleaning stimulates liquids to oscillate. The continuous compression and decompression results in intense pressure variation (up to 1.000 bar), which leads to strong currents in the micro level and therefore to a brush-effect, which removes particles from the surfaces of the objects to be cleaned.

Our ultrasonic based systems for cleaning bowling objects utilise frequencies and amplitude modulations which we specially adjusted to the characteristics of these objects. Once these frequencies are applied to a cleaning liquid they produce millions of small continuously imploding bubbles. This process is known as cavitation. The cavitation (*electronic brushing*) allows to dissolve grease and dirt even in areas, which are difficult to access.

PIN-CLEANING

BEFORE



The partly micro-fine greases, residues and dust dirt even settles in the smallest capillary grooves and cannot be removed efficiently using standard cleaning tools like brushes or sponges.



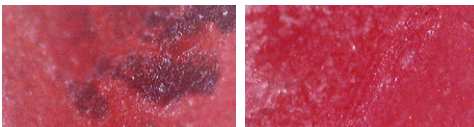
AFTER



The Ultrasound Cleaning system loosens even the finest dirt particles from the pin within a few minutes – preserving the material.

As 6 pins can be cleaned simultaneously you can easily calculate the time needed to clean your whole pin inventory.

BALL-CLEANING

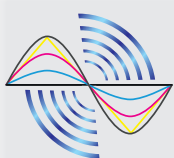


Also Bowling balls can be cleaned from lane oil and dirt. Left you see a microscopic magnification of a ball surface – before and after an ultrasonic cleaning. Your visitors and guests will value this service and be happy to come back to your facility.

TECHNICAL DATA	CLEANSTATION 35 ULTRASOUND CLEANING SYSTEM
Cleaning System	Welded, heat insulated Cleaning Basin consisting of 2mm stainless steel
Cleaning solution	SUT-Clean 4: Alkaline liquid concentrate to be mixed with water in a 1:20 5% ratio
Outer dimensions L x B x H	500 x 360 x 900 mm
Basin L x B x H	400 x 250 x 460 mm
Cubic dimension (Volume)	35 Liter
Ultrasonic devices	6 devices, directly cemented Ultrasound generator: TIG 254
Drain connection	3/4 inch ball valve
Electrical supply	230 V approx. 1,2 kW 50/60 Hz
Weight	approx. 37 kg

April 2020 E&OE. – Specifications and details subject to change without notice

April 2020 | ©Photos & Design: RMS Röttig Marketing Service www.rms-biz



SCHMITT gmbh
ULTRASCHALLTECHNIK

Albert-Schweitzer-Strasse 6
D-63165 Muehlheim-Laemmerspiel | Germany
Tel: +49 (0) 61 08.79 34 41 | Fax: +49 (0) 61 08.79 34 42
info@schmitt-ultraschall.de | www.schmitt-ultrasound.com